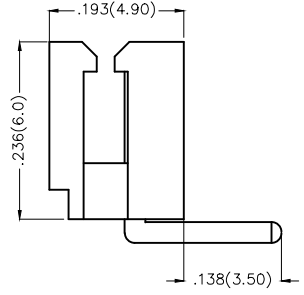
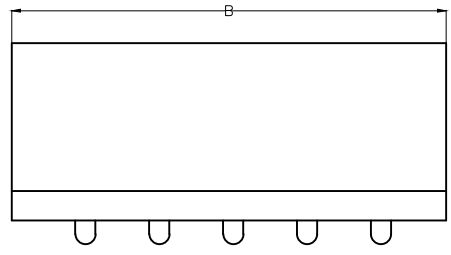


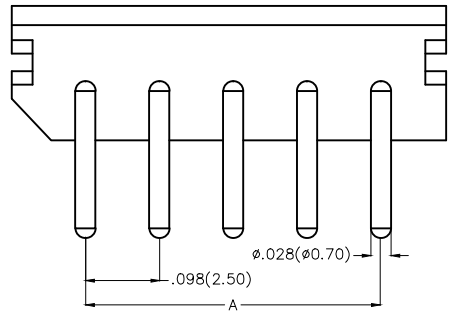
1 2 3 4 5 6 7 8

REV	LOCATIONS	DESCRIPTION	DATE	REVISER	APPD



Electrical

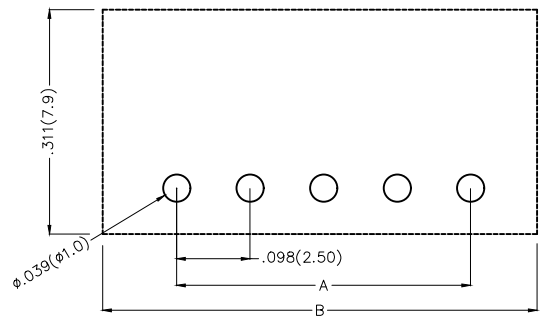
Current Rating: 3.0A AC(rms)/DC
 Voltage Rating: 250V AC(rms)/DC
 Contact Resistance: 20 mΩ Max
 Insulation Resistance: 1000 MΩ MIN
 Withstanding Voltage: 1000V AC r.m.s
 Temperature Range—Operating: -25°C~+85°C
Material and Plating
 Housing: Glass Filled Polyester(UL 94V-0)
 Contact Pin: Brass
 Plating: Full gold/ Full tin
 Mates With(Housing): FHG25002 Series



Ordering Information

FWF 250 25 — S XX B X 2 W5 B
 1 2 3 4 5 6 7 8 9 10

1 Category FWF—Wafer	2 Series Number 250—Pitch 2.50mm	3 Distinction No. 25	4 Row Option S—Single Row	5 Circuits XX	6 Entry Angle B—90° Angle
7 Plating 1—Gold Plated 2—Tin Plated	8 Material—Resin 2—PA66	9 Color—Resin W5—White	10 Packaging B—PE Bag		





Recommended P.C.Board Layout

<p>THIRD ANGLE PROJECTION</p>	GENERAL TOLERANCES (UNLESS SPECIFIED) X.±.012(0.30) X.±5' X.X±.008(0.20) .X'±2'		APPROVE BY FRANK	DATE 01/JUL/13	PART NO. FWF25025—SXXBX2W5B	ITEM NO. FWF25025	<p>Leader Of Industry</p>
	DESIGN UNITS Inch (metric)	X.XX±.006(0.15) .XX'±1' X.XXX±.004(0.10) .XXX'±0.5'	CHECKED BY JACOB	DATE 01/JUL/13	TITLE Wire to Board (Wafer) Pitch 2.50mm 90° Angled (DIP)		
SCALE 5:1	SIZE A4	DRAWN BY CHERRY	DATE 01/JUL/13	THIS DRAWING CONTAINS INFORMATION THAT IS PROPRIETARY TO TXGA INDUSTRIAL ELECTRONICS(S.Z)CO.,LTD AND SHOULD NOT BE USED WITHOUT WRITTEN PERMISSION			

1 2 3 4 5 6 7 8

REV	LOCATIONS	DESCRIPTION	DATE	REVISER	APPD

Plating : Tin Plated.				Plating : Gold Plated.			
Circuits (n)	Part No.	Dimensions(in/mm)		Circuits (n)	Part No.	Dimensions(in/mm)	
		A	B			A	B
2	FWF25025-S02B22W5B	.098(2.50)	.295(7.50)	2	FWF25025-S02B12W5B	.098(2.50)	.295(7.50)
3	FWF25025-S03B22W5B	.197(5.00)	.394(10.00)	3	FWF25025-S03B12W5B	.197(5.00)	.394(10.00)
4	FWF25025-S04B22W5B	.295(7.50)	.492(12.50)	4	FWF25025-S04B12W5B	.295(7.50)	.492(12.50)
5	FWF25025-S05B22W5B	.394(10.00)	.591(15.00)	5	FWF25025-S05B12W5B	.394(10.00)	.591(15.00)
6	FWF25025-S06B22W5B	.492(12.50)	.689(17.50)	6	FWF25025-S06B12W5B	.492(12.50)	.689(17.50)
7	FWF25025-S07B22W5B	.591(15.00)	.787(20.00)	7	FWF25025-S07B12W5B	.591(15.00)	.787(20.00)
8	FWF25025-S08B22W5B	.689(17.50)	.886(22.50)	8	FWF25025-S08B12W5B	.689(17.50)	.886(22.50)
9	FWF25025-S09B22W5B	.787(20.00)	.984(25.00)	9	FWF25025-S09B12W5B	.787(20.00)	.984(25.00)
10	FWF25025-S10B22W5B	.886(22.50)	1.083(27.50)	10	FWF25025-S10B12W5B	.886(22.50)	1.083(27.50)
11	FWF25025-S11B22W5B	.984(25.00)	1.181(30.00)	11	FWF25025-S11B12W5B	.984(25.00)	1.181(30.00)
12	FWF25025-S12B22W5B	1.083(27.50)	1.024(32.50)	12	FWF25025-S12B12W5B	1.083(27.50)	1.024(32.50)

 THIRD ANGLE PROJECTION	GENERAL TOLERANCES (UNLESS SPECIFIED)		APPROVE BY	DATE	PART NO.	ITEM NO.	 Leader Of Industry
	X.±.012(0.30)	X.±5'	FRANK	01/JUL/13	FWF25025-SXXBX2W5B	FWF25025	
	X.X±.008(0.20)	.X'±2'	CHECKED BY	DATE	TITLE		
	X.XX±.006(0.15)	.XX'±1'	JACOB	01/JUL/13	Wire to Board (Wafer) Pitch 2.50mm 90° Anglet (DIP)		
SCALE	SIZE	X.XXX±.004(0.10)	.XXX'±0.5'	DRAWN BY	DATE	THIS DRAWING CONTAINS INFORMATION THAT IS PROPRIETARY TO TXGA INDUSTRIAL ELECTRONICS(S.Z)CO.,LTD AND SHOULD NOT BE USED WITHOUT WRITTEN PERMISSION	
5:1	A4			CHERRY	01/JUL/13	REV 0	SHEET NO. 2/2